

SERVICE MANUAL

ICE SHAVER BLENDER
Model: SB-7X



1st Edition: May, 2009

CONTENTS: I

	Page
I. Trouble Shooting	3
II. How to remove the outer plastic covers	4
III. The unit does not run.	5
1. The red STOP lamp doesn't light.	5
1-1 Check of the power supply.	5
1-2 Check of the correct setting of the Ice Inlet Lid and Hopper Cover --	5
1-3 Check of the Safety Switch Rod	5
1-4 Check of the Safety Switch	5
1-5 Replacement of the Safety Switch	6
1-6 Check of the Power Switch	6
1-7 Replacement of the Power Switch	6
1-8 Check and Replacement of the Operation P.C.Board	7
1-9 Check and Replacement of the Power Supply/Main Control P.C.Board	7
2. The red STOP lamp lights.	8
2-1 Check and Replacement of the Operation P.C.Board	8
2-2 Check and Replacement of the Power Supply/Main Control P.C.Board	8
IV. The unit doesn't not shave.	9
1. The sound of motor's running can not be heard.	9
1-1 Check of operation of the Protector and Replacement	9
1-2 Check of the Main (Shaving) Motor	9
1-3 Replacement of the Main (Shaving) Motor	10
1-4 Check and Replacement of the Main Control P.C.Board	10
1-5 Replacement of the Solid State Relay (SSR)	10
2. The sound of motor's runing can be heard.	11
2-1 Check and Replacement of the Belt.	11
2-2 Check of the Shaving Pulley (Small•Large)	11
V. The unit does't not blend.	12
1. The sound of motor's running can not be heard.	12
1-1 Check and Replacement of the Protector	12
1-2 Check of the Blender Motor	12
1-3 Replacement of the Blender Motor	12
2. The sound of motor's runing can be heard.	13
2-1 Check and Replacement of the Belt	13
2-2 Check of the Blender Pulley (Large)	13

CONTENTS: II

	Page
VI. A sound of the unit is abnormal.	14
1. A sound of shaving ice is abnormal.	14
1-1 Check of the Ice.	14
1-2 Check of the Shaving Motor's Bearing	14
1-3 Replacement of the Main Shaft's Bearing.	14
1-4 Check and Replacement of the Belt.	15
2. A sound of blending is abnormal.	16
2-1 Replacement of the Coupling for Blender Cup	16
2-2 Replacement of the Bearing for Blender Cup	16
2-3 Replacement of the Bearing for Mixing Shaft	17
2-4 Check and Replacement of the Mixing Belt	17
3. The unit abnormally vibrates.	17
3-1 Check of the Installing place/basement.	17
3-2 Check of inside chamber of the Ice Hopper	17
VII. Water leaks.	18
1. Water leaks from the bottom of the unit.	18
1-1 Check of the Drain Hose.	18
1-2 Check of the Drainage Route.	18
2. Water leaks from the bottom of the Blender Cup.	19
2-1 Check and Replacement of the Blender Cup	19
2-2 Replacement of the Oil Seal	19
VIII. Others	20
1. Amount of shaved ice is too much or too small.	20
1-1 Adjustment of Ice Fineness (fine/coarse)	20
1-2 Adjustment of Shaving Time	20
2. The unit doesn't shave ice well.	20
2-1 Check of the Shaver Blade	20
2-2 Replacement of the Shaver Blade	20
3. Connecting Harness Wire Diagram	21
4. Exploded Diagram	22
5. Parts List	27

I. Trouble Shooting 1/1

Problems		Possible Causes
1. The unit does not run.	The red STOP lamp doesn't light.	The unit is unplugged. The Ice Inlet Lid is not in place. The Hopper Cover is not in place correctly. Problem on the Micro Switch. Problem on the Power Switch. Problem on the Operation P.C.Board. Problem on the Power Supply P.C.Board. Problem on the Main Control P.C.Board.
	The red STOP lamp lights.	Problem on the Operation P.C.Board. Problem on the Main Control P.C.Board.
2. The unit doesn't not shave.	The sound of motor's running can not be heard. (shaving motor)	The Protector is turned ON. Burned out of the Main Motor. Problem of the Main Control P.C.Board. Problem of the Solid-State Relay.
	The sound of motor's running can be heard. (shaving motor)	Worn-out of the Belt. Dropping-Off of the Shaving Pulley (Small). Dropping-Off of the Shaving Pulley (Large).
3. The unit doesn't not blend.	The sound of motor's running can not be heard. (shaving motor)	The Protector is turned ON. Burned-out of the B l e n d e r Motor. Problem of the Main Control P.C.Board.
	The sound of motor's running can be heard. (blender motor)	Worn-out of the Belt. Dropping-Off of the B l e n d e r Pulley (Large).
4. A sound of the units is abnormal.	A sound of shaving ice is abnormal.	Ice is too large. Problem on the bearing for the axis of the Shaving Motor. Problem on the bearing for the Main Shaft. The Belt is about to wear-out.
	A sound of blending is abnormal.	Problem of the Coupling. Problem on the bearing for the Blender Cup Problem on the bearing for the B l e n d e r Motor. Problem on the bearing for the Mixing Shaft. The Belt is about to wear-out.
	The unit abnormally vibrates.	The unit is not placed horizontally on a flat basement. Ice is too large. Ice is deviating to the one side in the Hopper.
5. Water leaks.	Water leaks from the bottom of the unit.	Drain Hose is about to fall-out. Drain Hose is risen-up. Drain is clogged.
	Water leaks from the bottom of the Blender Cup.	Blender Cup is cracking.. Worn-out of the Oil Seal.
6. Others	Amount of shaved ice is too much or too small.	Inappropriate adjustment for ice coarseness. Inappropriate adjustment for shaving time.
	The unit doesn't shave ice well.	A blade does not come out. Worn-out of the Shaver Blade.

● WARNING

**** Before attempting any inspection or repair, observe the followings strictly:**

1. Turn the power OFF.
2. Unplug the unit.
3. Keep fingers away from the blade edges. (Wear gloves)

II. How to remove the outer plastic covers 1/1

1. When removing the outer plastic covers for the purposes of check and replacement of the inner parts, do the following procedures:

① Remove Hopper Cover



② Remove Upper Cover



③ Remove Ice Hopper



④ Remove Side Cover (R & L)



⑤ Remove Side Cover (Right)



⑥ Remove Side Cover (Left)



⑦ Remove Rotary Wing



⑧ Remove Conical Frame



III. The unit does not run. 1/4

- When the unit does not run at all, perform check and repair with the following procedures:

1. **The red STOP lamp doesn't light.**

- When the red STOP lamp does not light even if turning on the power switch, perform check and repair with the following procedure:

1-1 **Check of the power supply.**

STOP
(Red Lamp)



- ① Is the On/OFF switch of the switchboard turned-on?
- ② Is the electricity supplied into an outlet?
- ③ Is the unit unplugged?

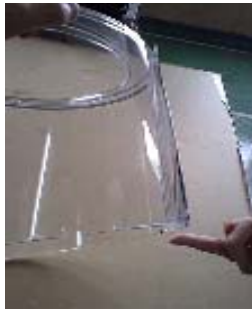
1-2 **Check of the correct setting of the Ice Inlet Lid and Hopper Cover**

- ① Is the Ice Inlet Lid shut completely?
- ② Is the Hopper Cover set correctly?



1-3 **Check of the Safety Switch Rod**

- ① Does the Rod of Safety Switch go up and down freely?
- ② When trying to press the Switch Rod seen in the backward upper part of the Upper Cover with a thin stick, does it go up and down freely?



● As a result of the above-mentioned checkings, when there is not any abnormality, check the safe switch.

1-4 **Check of the Safety Switch**

- ① Take off the harness leadings to a safe switch.
- ② With a tester, check electric-flow on the safety switch.



- * Insert a test stick into a connector of the harness, and push the lever of the safe switch with a finger
- * If there is no electric-flow, the Safety Switch is out of order.

III. The unit does not run. 2/4

1-5 Replacement of the Safety Switch

- ① Unscrew 2 screws for removing the Safety Switch.
- ② Install a new Safety Switch.
- ③ Connect the wire-harness.
- ④ Power on, and check whether a red STOP light turns on.
- ⑤ Assemble the unit with the reverse procedures.



1-6 Check the Power Switch

- ① Take off the wire-harness leading to the power switch.
- ② With a tester, check electric-flow on the safety switch.



- * Power-On, and insert a test stick into a screw portion on the switch.
- * If there is no electric-flow, the Power Switch is out of order.

Test-Stick

Power Switch

1-7 Replacement of the Power Switch

- ① Remove the Switch Cap.
- ② Take off a nut with a spanner and remove the Power Switch.
- ③ Install a new Power Switch.
Assemble the unit with the reverse procedures.



● When the power switch does not have abnormality, trouble of either PC Board for "Power Switch", "Operation", "Power Supply" or "Main Control" is presumed.

To be continued to next page →

III. The unit does not run. 3/4

1-8 Check and Replacement of the Operation P.C.Board

- ① Take off the wire-harness leading to the Operation P.C.Board ② Unscrew the screws fixing the "CONTROL PANEL UNIT". ③ Unscrew the screws fixing a P.C.Board and replace it to the new PC Board.



1-9 Check and Replacement of the Power Supply / Main Control P.C.Board

- ① Unscrew the screws fixing the Control PC Box Cover, and remove the cover.

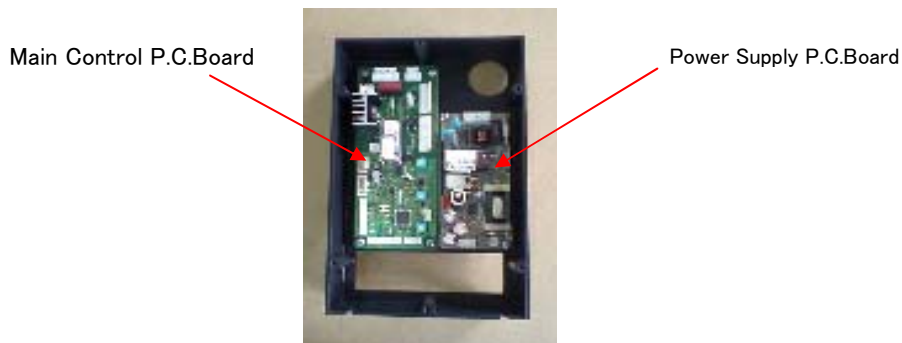


Control PC Box



Cover for Control PC Box

- ② In the Control PC Box, right one is a Power Supply P.C.Board, and the left one is a Main Control P.C.Board. Firstly replace the PC Board to the new one, and check electric-flow and working of the new PC Board. If the unit does not run correctly, then replace the Main Control P.C.Board.



Main Control P.C.Board

Power Supply P.C.Board

III. The unit does not run. 4/4

2. The red "STOP" lamp lights.

- In the case that the unit does not run while lighting the red "STOP" lamp, check and replace the parts with the following procedures:

STOP
(Red Lamp)



2-1 Check and Replacement of the Operation P.C. Board

- ① Check and replace the parts with the procedure as per the 1-8 "Check and Replacement of the Operation P.C.Board" on page 7



Operation P.C.Board



2-2 Check and Replacement of the Power Supply / Main Control P.C.Board

- ① Check and replace the parts with the procedure as per the 1-9 "Check and Replacement of the Power Supply/Main Control P.C.Board" on page 7

Main Control P.C.Board



IV. The unit does not shave. 1/3

- In case that the unit does not shave while blending can be done, check and replace the parts with the following procedures:

1. The sound of motor's running can not be heard.

1-1 Check of operation of the Protector and Replacement

- This unit is equipped with a Protector (Reset Switch) which will suspend the unit when the unit is overloaded due to such as containing foreign objects.
 - * For the check of the protector, open the small door of the main body right side.
 - * When a protector operated, a red button protrudes.
 - * Press the red button. A "click" sound will be made and the unit will reset automatically.

① Open the small door.



② Press the red button for resetting.



③ Check whether there is any foreign object's mixture, and turn-on for checking the unit's operation.

④ When the motor does not run even if resetting the protector, replace the protector.
The protector is attached to the Control Box Cover.



⑤ When the motor does not run even if replacing a protector, check and/or replace the Motor / the Power Supply PC Board / Main Control P.C. Board with the following procedures:

1-2 Check of the Main (Shaving) Motor

① Take off the wire-harness leading to the motor.



② Connect a testing cord to the motor directly and check the motor's correct operation.



IV. The unit does not shave. 2/3

1-3 Replacement of the Main (Shaving) Motor

● As a result of checking, when a slice motor is abnormal, replace the motor with the following procedures:

① Take off the belt.



② Unscrew the 4 screws fixing the motor.



③ Remove the motor and take off a belt.



④ Attach a belt to a new motor, and assemble with the reverse procedures.

1-4 Check and Replacement of the Main Control P.C.Board

① Check and replace the parts with the procedure as per the 1-9 "Check and Replacement of the Power Supply/Main Control P.C.Board" on page 7

Main Control
PC Board



Power Supply P.C.Board

1-5 Replacement of the Solid State Relay (SSR)

● The SSR is a semiconductor relay for ON - OFF of the Shaver Motor.

As a result of above-mentioned check, there is no abnormal and in case that the blender motor runs, but the shaver motor dose not run, a trouble of the SSR is presumed.
(The SSR is located behind the PC Board's Box.)

● Replace the SSR with the following procedures:

① Take off the wire-harness leading to SSR.



② Unscrew the screws fixing the SSR.



③ Attach a new SSR and assemble with the reverse procedures.



NOTICE

● Connect a red wire-harness to the lower right side terminal of SSR (No.3)

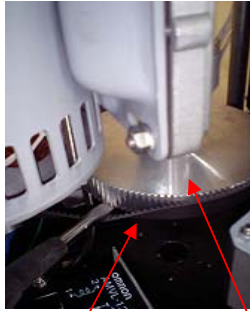
IV. The unit does not shave. 3/3

2. The sound of motor's runing can be heard.

2-1 Check and Replacement of the Belt

- When there is a remarkable damage on the belt such as in wearing-out or dropping-off, replace the belt with the following procedures:

① Take off the pulley.



Belt

② Firstly, suspend a new belt to the small pulley, and secondary, suspend the belt to the large pulley with rotating the pulley.



Pulley (Small)



Belt

Pulley (Large)

2-2 Check of the Shaving Pulleys (Small • Large)

- When the Shaving Pulley (Small and/or Large) are dropped off, return the pully to the original position and suspend a belt.
- For suspending a belt, refer to the 2-1 "Check and Replacement of the Belt" on page 11.



Shaving Pulley
(Small and Large)

V. The unit doesn't blend. 1/2

- In case that the unit does not blend while shaving can be done, check and replace the parts with the following procedures:

1. **The sound of motor's running can not be heard.**

1-1 Check and Replacement of the Protector

- A protector for the Blender Motor is automatic return type, and it is installed inside the blender motor.
- When the motor is overloaded, the protector will work to suspend the unit.
In this case, because the motor overheats, it doesn't restore it until falling in temperature.
The unit will reset automatically in 30-60 minutes.

1-2 Check of the Blender Motor

- ① Take off the wire-harness leading to the Blender Motor.



- ② Use a testing cord and connect the test cord directly to the Blender Motor to check electric-flow on the motor.



Testing Cord



1-3 Replacement of the Blender Motor

- ① Take off the wire-harness leading to the Blender Motor.



- ② Capsize the unit and remove an oval cover of the bottom of the unit.



- ③ Take off the belt.



- ④ Unscrew the 3 screws fixing the motor.



- ⑤ Remove the Blender Motor.



- ⑥ Replace a new motor and assemble with the reverse procedures.

V. The unit doesn't blend. 2/2

2. The sound of motor's running can be heard.

2-1 Check and Replacement of the Belt

- When there is a remarkable damage on the belt such as in wearing-out or dropping-off, replace the belt with the following procedures:

- ① Remove an oval shaped cover of the bottom of the unit.
- ② Firstly, suspend a new belt to the small pulley, and secondary, suspend the belt to the large pulley with rotating the pulley.



Belt

2-2 Check of the Blender Pulley (Large)

- ① When the pulley is dropped off, return the pulley to the original position.



Blender Pulley(Large)

VI. A sound of the unit is abnormal. 1/4

1. A sound of shaving ice is abnormal.

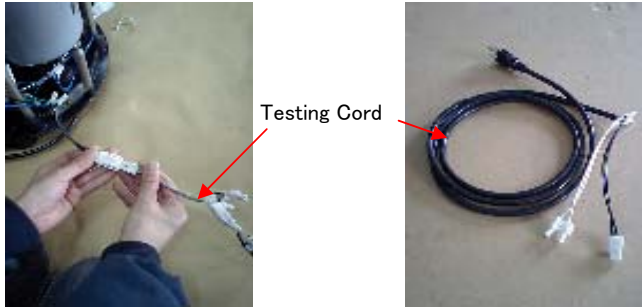
1-1 Check of the Ice

- When big ice is mixed in the Hopper inside, there is a possibility of making a peculiar noise occurs. Check the internal ice.

1-2 Check of the Shaving Motor's Bearing

- When the bearing of the axis of the Shaving Motor was damaged, a peculiar noise occurs. With the same procedure as per the 1-2 "Check of the Main (Shaving) Motor" on page 9, Connect a testing cord to the motor directly and check the motor's running sound.

- ① Connect a testing cord to the motor directly and check the motor's running sound.



- ② When having a sound abnormally, the bearing of the shaving motor is damaged. Replace the motor with the procedure as per the 1-3 "Replacement of the Main (Shaving) Motor" on page 10.

1-3 Replacement of the Main Shaft's Bearing.

- When the bearing of the main shaft was damaged, a peculiar noise occurs.
- Replace the bearing with the following procedures:

- ① Remove the Shaving Motor with the procedure as per the 1-3 "Replacement of the Main (Shaving) Motor" on page 10.

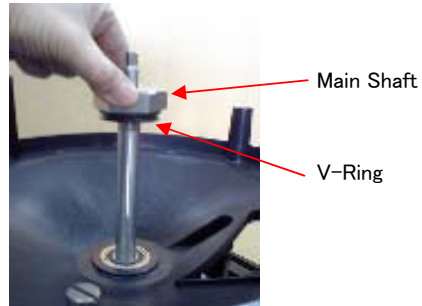
- ② Remove a Large Pulley.



- ③ Remove a Shaft Stopper.



- ④ Pull the Main Shaft with hitting upward.



- ⑤ When the V-Ring (rubber) inserted in a main shaft was worn, a bearing cause to be damaged. Replace the V-Ring to the new one.

V-Ring



To be continued to next page →

VI. A sound of the unit is abnormal. 2/4

→ To be continued from the former page.

- ⑤ Remove a Snap Ring fixing a Lower Bearing.



Snap Ring

- ⑥ Using a round stick, hit the Lower Bearing from the center hole of the upper bearing and take off the Lower Bearing.



- ⑦ Remove the Upper Bearing while hitting from the machine backside with using a round stick.



- ⑧ Insert a new bearing while hitting it gently with a hammer.



- ⑨ After replacing the bearing, assemble with the reverse procedures.

NOTICE

- Upper Bearing is made by stainless steel, and Lower Bearing is steel.
Pay careful attention not to use these bearing by mistake upside down.

(Upper Bearing: 6003-2RS)

(Lower Bearing: 6003-LLU)

1-4 Check and Replacement of the Belt.

- When the belt is damaged and/or is about to be worn-off, a peculiar noise occurs.

- ① Replace the Belt with the procedure as per the 2-1 "Check & Replacement of Belt" on page 11.

VI. A sound of the unit is abnormal. 3/4

2. A sound of blending is abnormal.

2-1 Replacement of the Coupling for Blender Cup

- When coupling (made of rubber) is damaged, a peculiar noise occurs.
- Replace the coupling with the following procedures:
 - ① Holding a mixing blade with a thick cloth, loosen the coupling counter-clockwise and take it off.
 - ② From the order of an Wave-Washer, a Plate Washer, and a new Coupling, insert these to assemble.



Notice

- Blender Cup has blades. Keep fingers away from blade edges.

2-2 Replacement of the Bearing for Blender Cup

- When the bearing was damaged, a peculiar noise occurs.
There are 2 (two) bearings of "Upper Bearing" and "Lower Bearing".
- Replace the bearings with the following procedures:
 - ① Holding a mixing blade with a thick cloth, loosen the coupling counter-clockwise and take it off.
 - ② Hit the central axis not to damage it and pull out the blade assembly.
 - ③ Using a round stick, hit the Bearing from the center of hole (for both "Upper" and "Lower") and remove the bearings.



- ④ After inserting the new bearing, assemble with the reverse procedures.

Notice

- Blender Cup has blades. Keep fingers away from blade edges.

VI. A sound of the unit is abnormal. 4/4

2-3 Replacement of the Bearing for Mixing Shaft

- When the bearing of Mixing Shaft was damaged, a peculiar noise occurs.
There are 2 (two) bearings of "Upper Bearing" and "Lower Bearing".
- Replace the bearings with the following procedures:

① Capsize the unit and remove an oval cover of the bottom of the unit.



② Take off the belt.



③ With a flathead screwdriver and hammer, strike the SUS made Coupling spinning to the left.



④ Use a round stick and hammer and punch out the Mixing Shaft for removing.



⑤ To remove Lower Bearing, use a screwdriver and hammer, punch out the bearing from the center of upper bearing.



⑥ For removing the Upper Bearing, do the same procedure from the machine backside.

⑦ Insert a new bearing while hitting it gently with a hammer.
Re-assemble with the reverse procedures.

2-4 Check and Replacement of the Mixing Belt

- When there is a remarkable damage on the belt such as in wearing-out or dropping-off, a peculiar noise occurs.
Replace the belt with the procedure as per the 2-1 "Check and Replacement of the Belt" on page 13.

3. The unit abnormally vibrates.

- When a machine abnormally vibrates, the following causes are presumed.

3-1 Check of the Installing place/basement.

① Is the machine horizontally on a steady flat surface?

3-2 Check of inside chamber of the Ice Hoppe

① Is there a big size ice mixed in the Hopper?
② Are the Ice turning around with deviating to the one side?

VII. Water leaks. 1/2

1. Water leaks from the bottom of the unit.

● When water leaks from the bottom of the unit, check the followings:

1-1 Check of the Drain Hose.

① Is not a Drain Hose about to fall out?



NG

② Does not a Drain Hose rise than the outlet port of the machine?



NG



OK



OK

③ Is not a Drain Hose clogged up?

Check whether fur and/foreign objects stick to the inside of the drain hose and they are clogged up.

1-2 Check of the Drainage Route.

● Check whether the drainage route in the machine is clogged-up and blocked.

① Is not an upper part drainage clogged up?



Upper Part Drainage

② Is not an interior drain hose clogged up?



Interior Drain Hose

③ Is not a connecting tap for drain hose clogged up?



Connecting Tap for Drain Hose

VII. Water leaks. 2/2

2. Water leaks from the bottom of the Blender Cup.

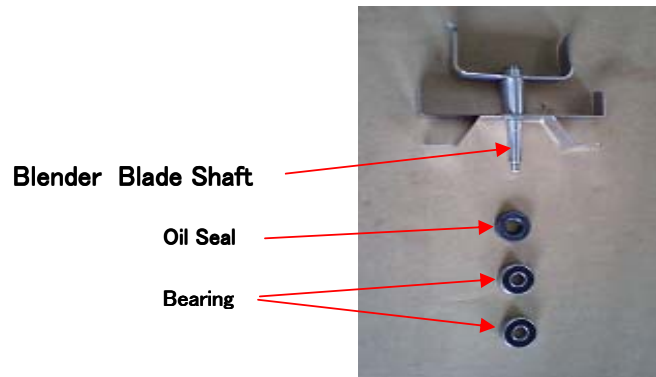
When you pour water into the bottle and water leaks in a few minutes, check and repair with the following procedures:

2-1 Check and Replacement of the Blender Cup

- When the Blender Cup cracks on its side or bottom and water leaks, replace the cup itself.
- ① Replace the Coupling and Bearing with the procedures as per the 2-1 "Replacement of the Coupling for Blender Cup" and the 2-2 "Replacement of the Bearing for Blender Cup" on page 16.

2-2 Replacement of the Oil Seal

- When water leaks out from the central part of the cup backside, the Oil Seal of the mixing blade axis is worn.
- ① Replace the Oil Seal with the procedures as per the 2-1 "Replacement of the Coupling for Blender Cup" and the 2-2 "Replacement of the Bearing for Blender Cup" on page 16.



VIII. Others

1. Amount of shaved ice is too much or too small.

1-1 Adjustment of Ice Fineness (fine/coarse)

① Turn the Blade Adjustment Screw with using a coin or a flathead screwdriver.



- * For increase ...
Turn the blade adjustment screw to the right.
- * For decrease ...
Turn the blade adjustment screw to the left.

Blade Adjustment Screw

1-2 Adjustment of Shaving Time

① Push down the right side door of the unit for opening door.



Side Door

② Upper small screw is a Shaving Time Adjustment Screw.
Turn the upper screw to adjust the shaving time.



Shaving Time Adjustment Screw

- * For increase ...
Turn the screw to the right.
- * For decrease ...
Turn the screw to the left.

2. The unit doesn't shave ice well.

2-1 Check of the Shaver Blade

① A blade does not come out.
See the 1-1 "Adjustment of Ice Fineness (fine/coarse)" on page 20
and adjust to the blade come out. (turn the adjustment screw to the right)

2-2 Replacement of the Shaver Blade

- When a blade is worn, ice can not be shaved.
- Replace the Shaving Blade with the following procedures:

① Remove the Conical Frame ② Take off the screws fixing the blade

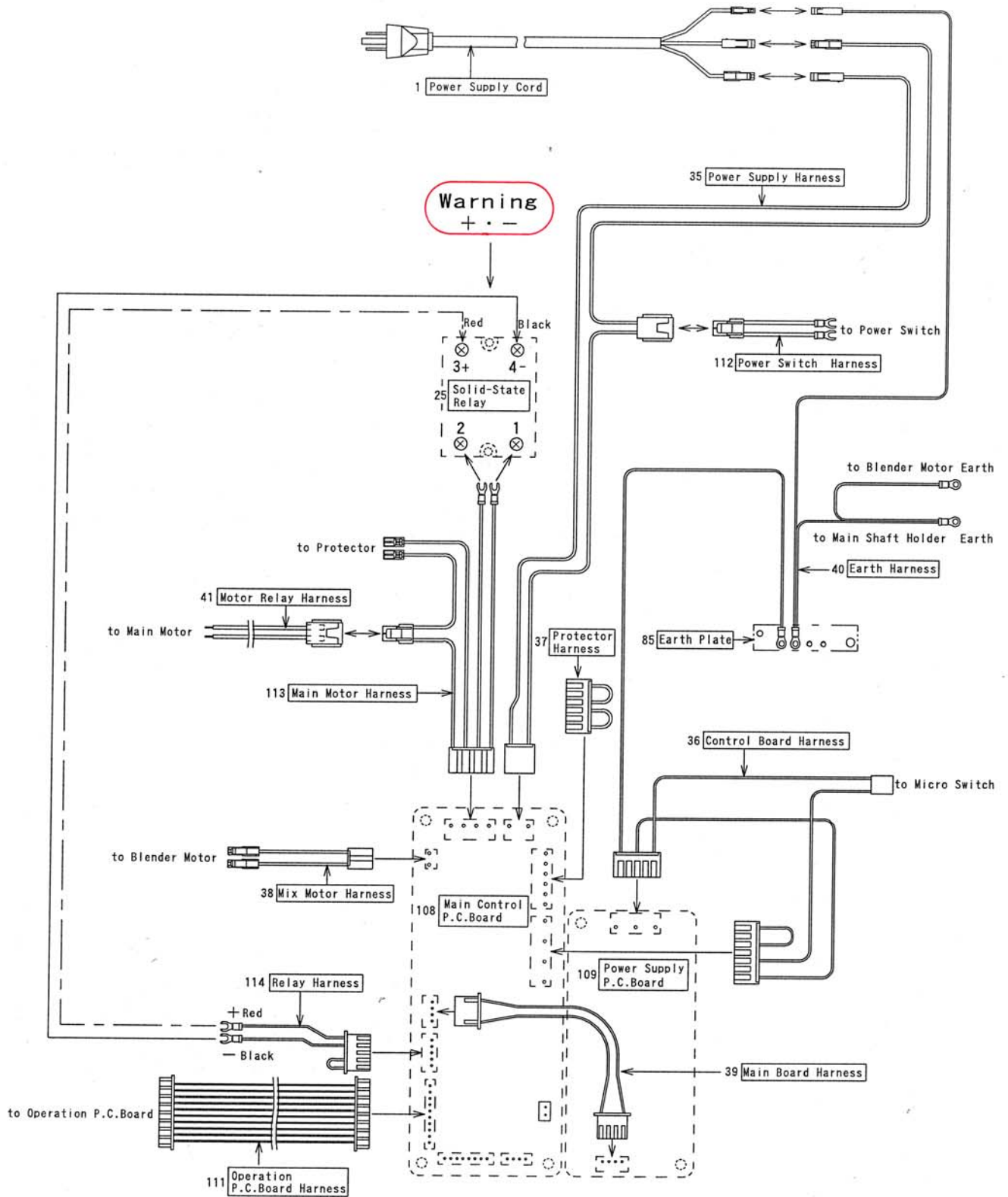


③ After replacing the blade to the new one, and re-assemble the parts with the reverse procedures.



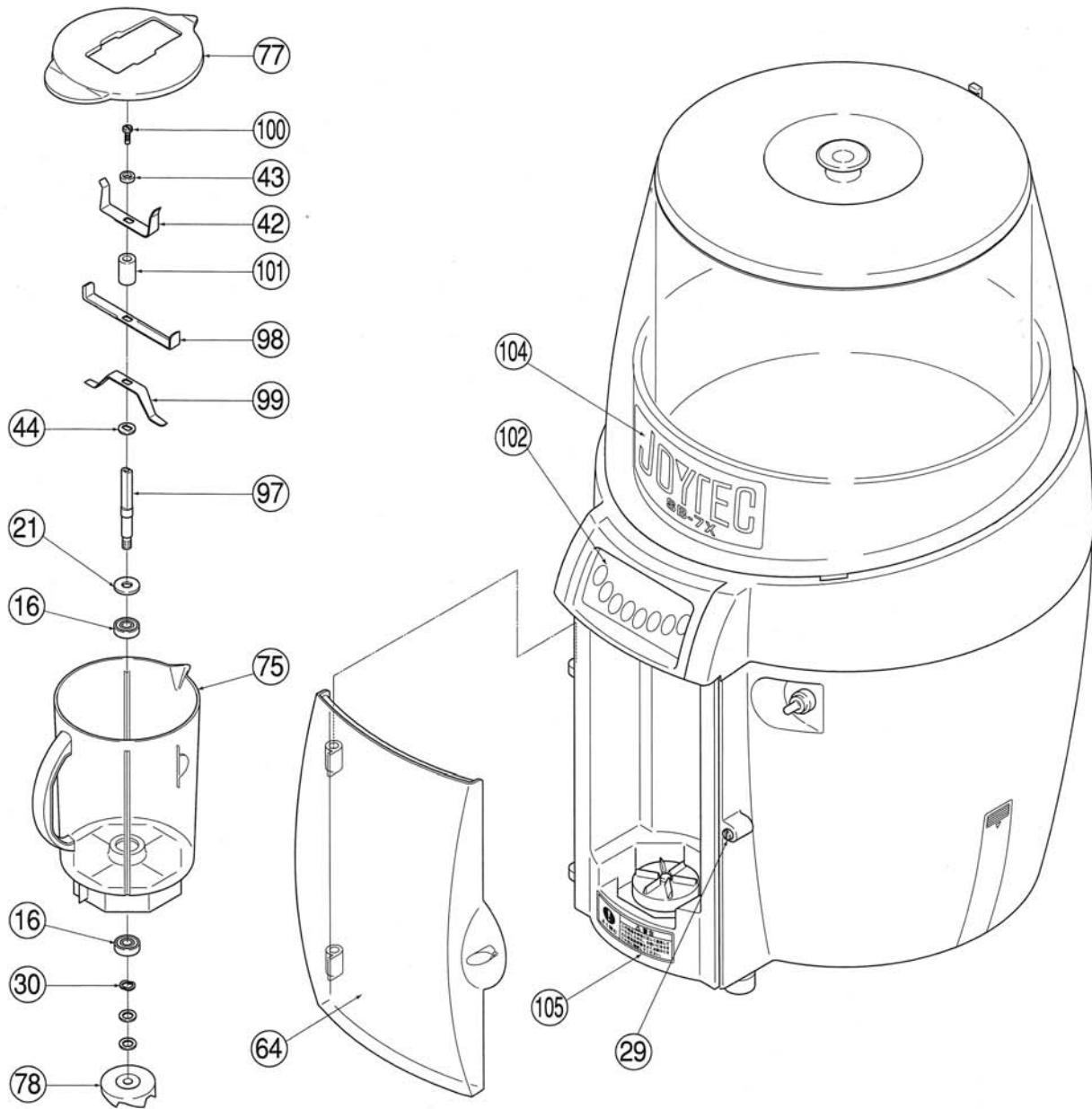
VIII. Others

3. Connecting Harness Wire Diagram

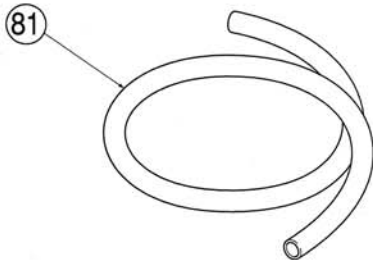


VIII. Others

4. Exploded Diagram 1/5

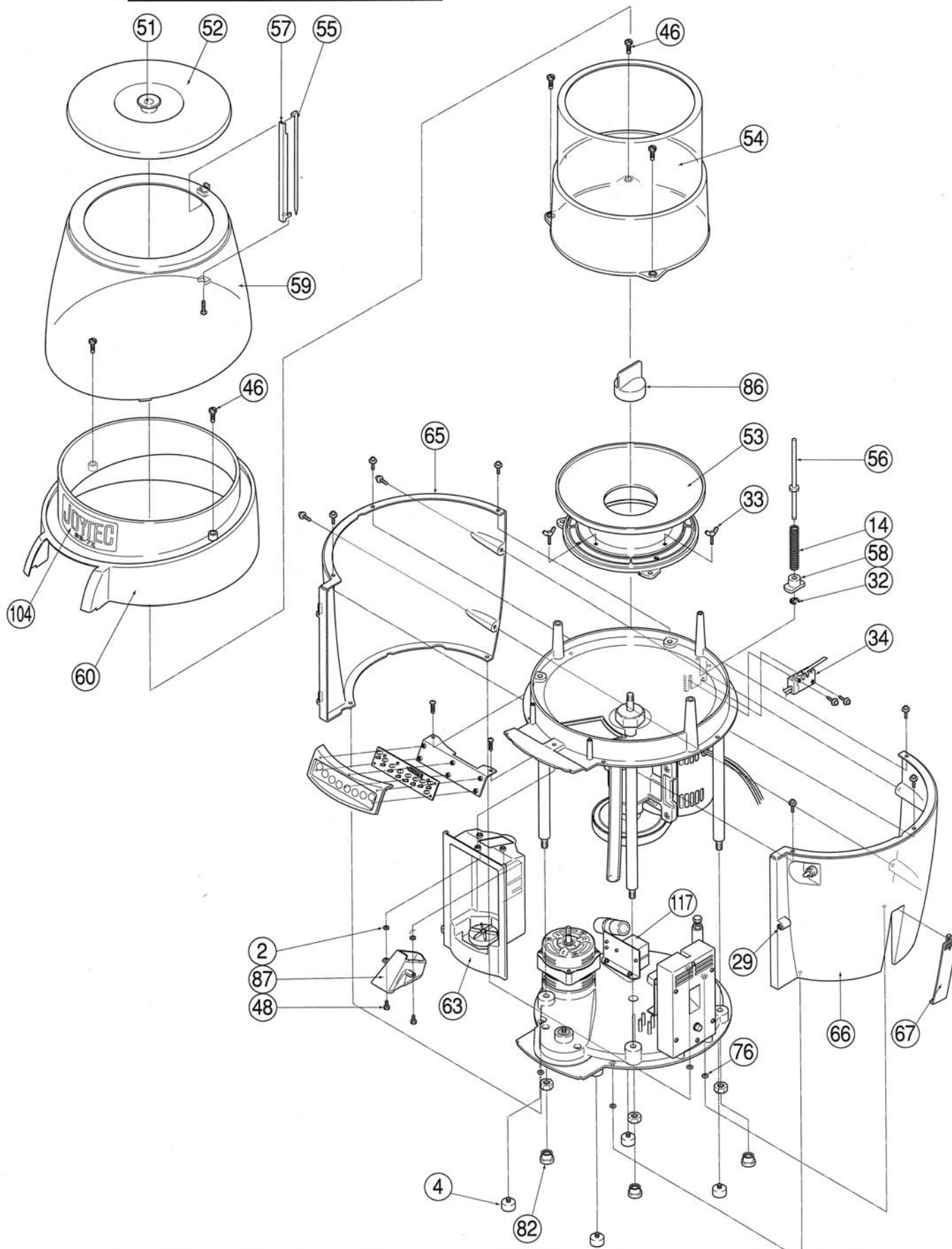


Accessories



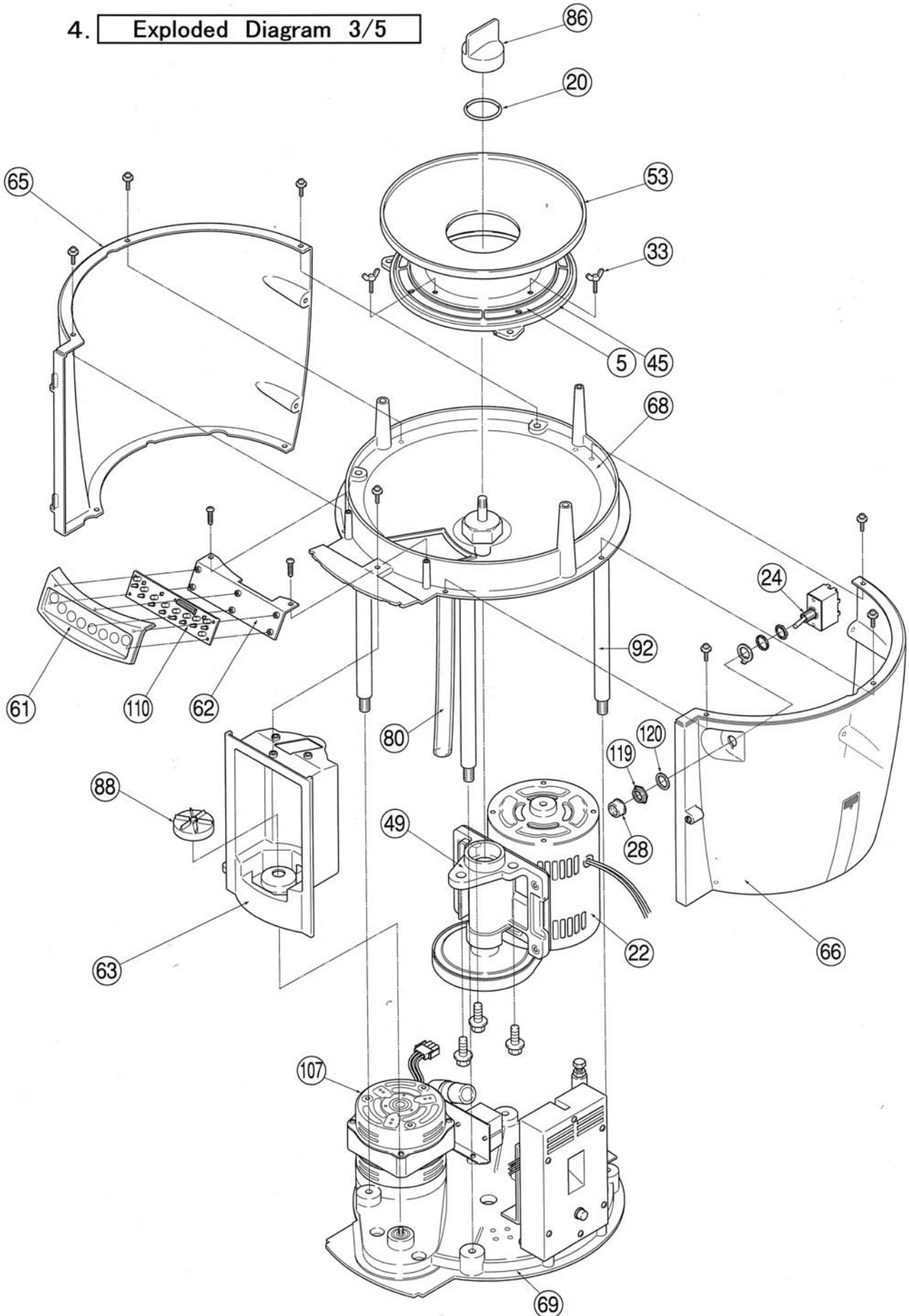
VIII. Others

4. Exploded Diagram 2/5



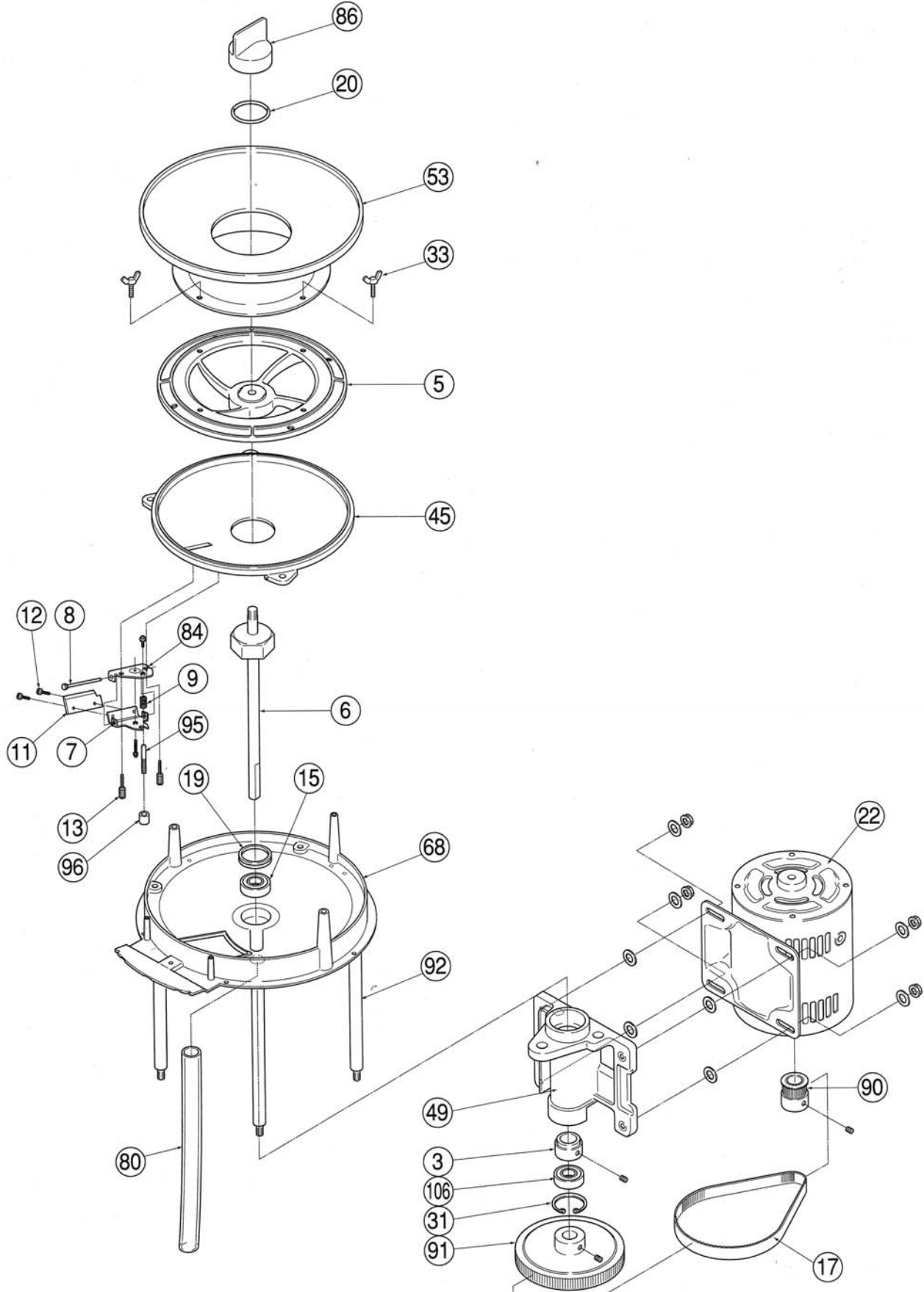
VIII. Others

4. Exploded Diagram 3/5



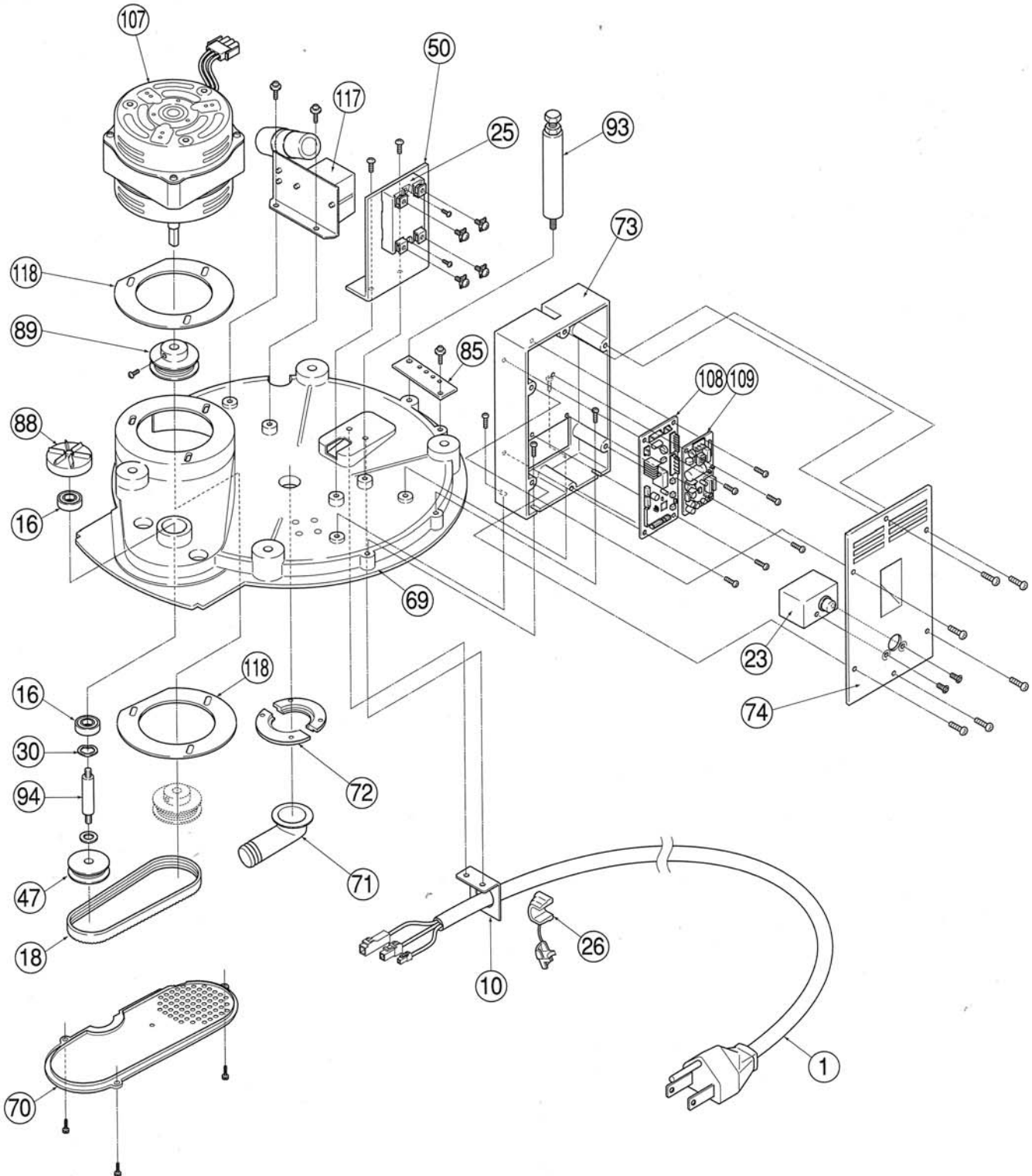
VIII. Others

4. Exploded Diagram 4/5



VIII. Others

4. Exploded Diagram 5/5



VIII. Others

5. Parts List 1/2

Item N.o	Part Name	Quantity	Remarks	Item N.o	Part Name	Quantity	Remarks
1	Power Supply Cord	1		31	C Ring RTW-35	1	
2	Plastics Washer TM-147-2	2		32	E Ring ETW-4	1	
3	Shaft Stopper	1		33	Butterfly Bolt M4*8	4	
4	Rubber Leg	4		34	Micro Switch ABV163250F4	1	
5	Rotary Wing with Bush	1		35	Power Supply Harness	1	
6	Main Shaft	1		36	Control Board Harness	1	
7	Blade Fitting Plate	1		37	Protector Harness	1	
8	Blade Adjustment Shaft	1		38	Mix Motor Harness	1	
9	Blade Adjustment Spring	1		39	Main Board Harness	1	
10	Plate for Fitting Cord Clamp	1		40	Earth Harness	1	
11	Shaver Blade	1		41	Shaving Relay Harness	1	
12	NSF Screw 5*6.5	2		42	Blender Blade(Upper)	1	
13	NSF Screw 5*7	2		43	Blade Spacer L5	1	
14	Spring	1		44	Blade Washer	1	
15	Bearing SS-6003-2RS	1		45	Conical Frame	1	
16	Bearing 2280DD	4		46	NSF Screw 6*22	5	
17	Belt 100S-3M-456	1		47	MIX Pulley A	1	
18	Belt 180-JT-3	1		48	Black Head Screw	2	
19	V-Ring V-38A	1		49	Main Shaft Holder	1	
20	O-Ring P-30	1		50	Relay Mounting Bracket	1	
21	Oil Seal AG0204A0	1		51	Lid Knob	1	
22	Main Motor	1		52	Ice Inlet Lid	1	
23	Protector 5.0A	1		53	Rotary Hopper	1	
24	Power Switch(S-821UL)	1		54	Ice Hopper	1	
25	Relay(AQR752)	1		55	Switch Rod L	1	
26	Cord Bush	1		56	Switch Rod S	1	
27	Wire Connector 2-SD	2		57	Rod Guide	1	
28	Switch Cap AT-401K	1		58	Rod Stopper	1	
29	Magnet Catcher SM-123	1		59	Hopper Cover	1	
30	Wave Washer WW-8	2		60	Upper Cover	1	

VIII. Others

5. Parts List 2/2

Item N.o	Part Name	Quantity	Remarks	Item N.o	Part Name	Quantity	Remarks
61	Operation Cover	1		91	Shaving Pulley L	1	
62	Operation Backside Cover	1		92	Support Post	4	
63	Front Cover	1		93	Motor Prop	1	
64	Front Door	1		94	Mixing Shaft	1	
65	Side Cover Left	1		95	Blade Adjustment Bolt	1	
66	Side Cover Right	1		96	Blade Adjustment Screw	1	
67	Side Door	1		97	Blender Blade Shaft	1	
68	Upper Flame	1		98	Blender Middle Blade	1	
69	Body Base	1		99	Blender Lower Blade	1	
70	Bottom Cover	1		100	Blade Holding Screw	1	
71	Elbow for Drain Hose	1		101	Blade Spacer L25	1	
72	Pipe Flange	2		102	Operation Label	1	
73	Control Box	1		103	ON-OFF Label	1	not in drawing
74	Control Box Cover	1		104	Bland Label	1	
75	Blender Cup	1		105	PL Label	1	
76	Cover Cushion	4		106	Bearing SS-6003-LLU	1	
77	Bottle Cap	1		107	Blender Mortor (115V)	1	
78	Upper Coupling	1		108	Main Control P.C.Board	1	
79	missing number			109	Power Supply P.C.Board	1	
80	Drain Hose 275	1		110	Operation P.C.Board	1	
81	Drain Hose 1450	1		111	Operation P.C.Board Harness	1	
82	Insulation Cap	3		112	Power Switch Harness	1	
83	missing number			113	Shaving Mortor Harness	1	
84	Fitting Plate	1		114	Relay Harness	1	
85	Earth Plate	1		115	Operation Board Manual(7X/7E)	1	
86	Rotary Wing Fix Nut	1		116	Carton Box Set	1	
87	Ice Chute	1		117	R/C Unit	1	
88	Lower Coupling	1		118	Bace Plate	1	
89	Blender Pulley Large	1		119	Swich Nut AT-401N	1	
90	Shaving Pulley Small	1		120	Swich Packing At-401P	1	